



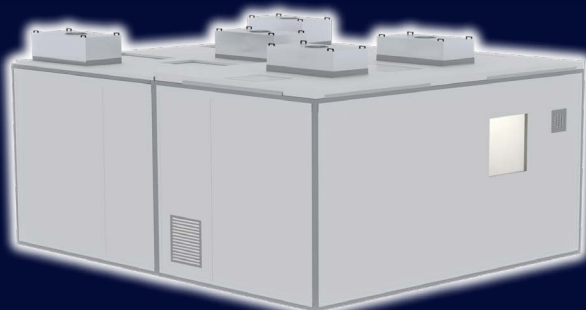
ISOPOD SHELL MODEL TECHNICAL DATA

KEY INFORMATION

- Branding** Printed vinyl graphics or full wraps on request
- Sizes** 3x2m, 3x3m, 3x4m, 4x4m, 3x5m* (all standard sizes – bespoke options also available)
- Personnel Airlock** 1.5x1.5m* (On 4x4m model – PAL is 1.5x2m)
- Material Airlock** 1.5x2m*
- Classifications** ISO6, 7, 8, CNC* (Bespoke ISO5 and cGMP models also available)
- Ceiling Height** 2.1m* (Bespoke heights available)
- Furniture** Full fit-out available. To view the range
- Equipment** Full fit-out available. To view the range
- Power & Network** 2 x 13amp sockets. Fuse board included.* (Additional 13-amp sockets and CAT6A data ports available in bespoke configurations)
- Lighting** 600 x 600mm LED lighting panels.* Surface-mounted panels. (Flush-mounted LED and 1200 x 600mm available as bespoke option)
- Filtration** GT Flow Plus AC Fan Filter Units with roomside change and gel seal
- Air Conditioning** Not available as standard. For more information on the different HVAC options available, please consult a member of the Isopod team
- *Standard model option

STRUCTURAL FEATURES

- External Shell** GT Shell Lite PIR insulated composite panels – 50mm thickness*
- Shell Colour** RAL9003 (white) – 25 micron powder-coated mild steel
- Branding** Printed vinyl graphics or full wraps on request
- Frame** Standard Isopod framework is 304 stainless steel. A more lightweight aluminium frame option is available as a bespoke option. The framework is held together by specially made connectors, designed solely for these products and tested rigorously by Guardtech's highly experienced in-house engineers
- Walls & Ceiling** GT Shell Lite 50mm PIR insulated powder-coated modular composite panels
- Doors** GT Access Plus single semi-flush with pressure relief valve and push-pull handles* (bespoke lever and latch handle also available). 300x600mm glazing panel as standard* (other options available bespoke. Rapid rise door also available as bespoke option)
- Windows** Two per Isopod: sized 700x700m* (bespoke options available)
- Flooring** No flooring as standard. (GT Deck Lite vinyl tiles can be added to order)
- Monitoring** GT Scan Lite Digihelic* (Digital EMS can be added as bespoke option)



Guardtech House
Homefield Road,
Barnhill, CB9 8QP